

Keys to the collection— Form

Blamire Young

“After a few years residence among the natives I could speak the language quite well. When I had attained this knowledge of their tongue, I found I was fast losing my own.”

—William Buckley, *Reminiscences of James Buckley*,
State Library of Victoria's Manuscripts Collection

1862 William Blamire Young was born 9 August at Londesborough, Yorkshire, UK. He was educated at Forest School, Walthamstow, Essex, and studied mathematics at Cambridge University.

1884 He was appointed mathematics master at Katoomba College, New South Wales, a position he held for eight years. In his spare time he painted.

1893 Returned to England.

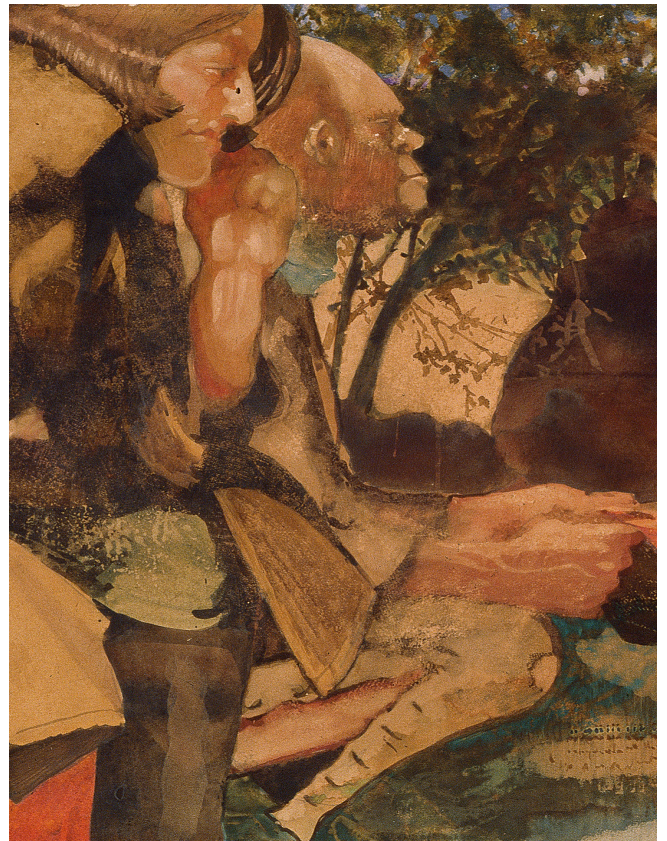
1895 Married Mabel Ellen Sawyer, an accomplished woodcarver. They returned to Australia in the same year.

1909 First solo show was held in Melbourne. Created large watercolour scenes of Melbourne.

1911 Commissioned to produce new designs for the first Commonwealth of Australia stamps. The 'Kangaroo' and 'Map' stamps were first issued in 1913 and continued in use until 1935.

1912 Returned to England again in December.

1915 Joined the British Army as an instructor in musketry, training soldiers in the use of firearms. Immediately after the war, he took up painting again and exhibited at the Royal Academy and its



counterpart, the Royal Society of British Artists.

1923 Back in Australia, Young settled in Montrose in the hills about 20 miles east of Melbourne. He was art critic for The Herald newspaper and held occasional solo exhibitions.

1935 Died at Montrose.

Buckley acting as interpreter at Indented Head—

Is a pictorial presentation where Aboriginals figures merge with the scenery: their spears and poles seem to dissolve into the distant pattern of trees, while the Europeans fill the frame in the foreground. Buckley is placed with the Aboriginal group, facing the Europeans.

**Geelong
Gallery**

AusVELS level 2 to 6

geelonggallery.org.au/learn

Blamire Young
*Buckley acting as interpreter at
Indented Head (detail) 1901*
watercolour
Collection: Geelong Gallery

G E E L O N G
E E L O N G A L L
E L O N G A L L
L O N G A L L E R
O N G A L L E R
N G A L L E R
G A L L E R Y



Blamire Young

born United Kingdom 1862;
arrived Australia 1884;
returned United Kingdom 1913-23;
died Australia 1935

*Buckley acting as interpreter at
Indented Head 1901*

watercolour
58.0 x 180.0 cm
Collection: Geelong Gallery
Gift of GM Hitchcock, 1903

Questions

Who do you think the European men are in the painting? What do you think the objects on the ground were used for?

Research

Find out more about the 1835 encounter at Indented Head, Victoria. What was it about?

Write a short story on your findings, and include your personal opinions about this meeting.

Activity

Create a storyboard about William Buckley's life in Australia. Try to paint it in the style used by Blamire Young, with only a few colours and black.

If you are doing this activity in your classroom, your school might like to borrow the free William Buckley Learning Box from the Geelong Gallery to support your work.